

Updated Friendsville Zoning District Purpose Statements

1. Rural Development (RD) District

It is the intent of the Rural Development District to conserve agricultural lands, protect scenic and natural resources, and maintain the rural character of the Town. This district is further intended to accommodate limited residential and other compatible uses in a manner that preserves open space and supports the continuation of agricultural operations.

2. Suburban Residential (SR) District

It is the intent of the Suburban Residential District to provide for stable residential neighborhoods in a suburban environment. Development within this district shall be designed to promote compatibility with existing residences, protect open space, and support a high quality of life for residents.

3. Town Residential (TR) District

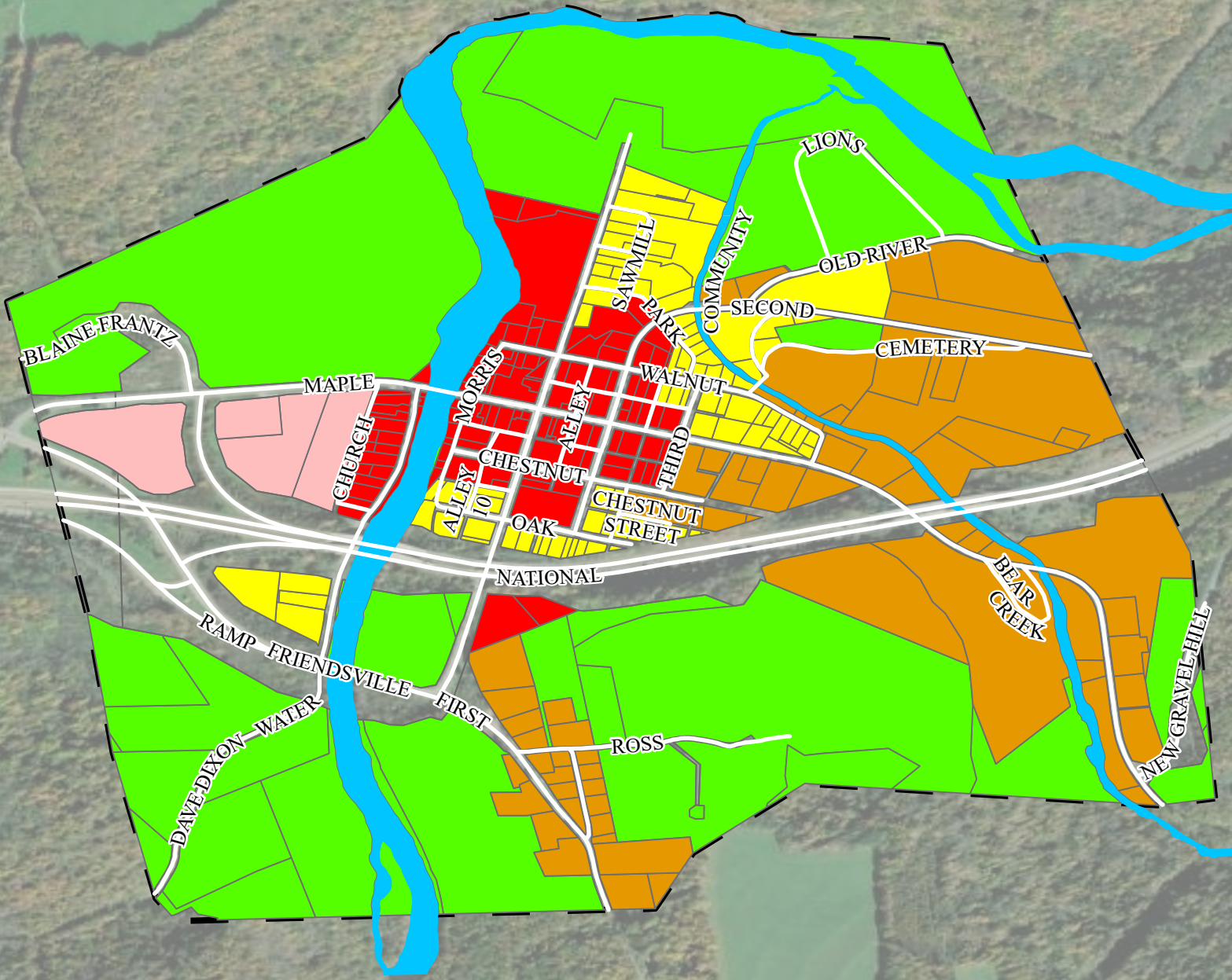
It is the intent of the Town Residential District to provide opportunities for a variety of housing types in a cohesive neighborhood setting. This district is intended to encourage residential development in locations with convenient access to the Town Center and community services while maintaining an orderly and attractive streetscape.

4. Town Center (TC) District

It is the intent of the Town Center District to serve as the social, cultural, and commercial heart of the community. This district is intended to promote a vibrant, pedestrian-oriented environment with a compatible mix of residential, retail, office, civic, and cultural uses that contribute to a lively and sustainable downtown core.


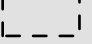






5. General Commercial (GC) District

It is the intent of the General Commercial District to accommodate a broad range of retail, service, and commercial activities that meet the needs of residents and the regional market. This district is intended for locations that can support vehicular access, larger-scale development, and businesses that may not be suitable for the Town Center.



Sources: Garrett County GIS,
Existing Zoning Ordinance

0 0.25 0.5 Miles

	Town Residential		Town Boundary
	Suburban Residential		River
	Town Center		Roads
	General Commercial		
	Rural Development		

Friendsville Draft Zoning